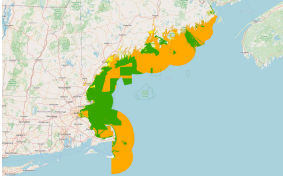


Gulf of Maine NBS Data Confidence / Uncertainty (Seascapes 2)

Type File Geodatabase Feature Class



Tags Gulf of Maine, Bathymetry

Summary

This dataset was created to support coordinated ocean planning among the three state partnership agencies, between state and federal organizations and the public at large. This data confidence layer was created to allow users to assess data confidence of the Seascapes 2 Geofom data layer. This layer was updated in 2026 to align with the updated Seascapes product, Seascapes 2.

Description

The co-located uncertainty data provide quantitative estimates of the accuracy of each cell in the elevation surfaces, with uncertainty values based on the equipment used, the age of the survey and the level of interpolation used to determine the cell elevation. Refer to Appendix A for ArcGIS tool specifics and guidance.

The data confidence layer is derived from bathymetric data attributes pertaining to year of collection and resolution. Typically, older datasets have lower resolution while more recent datasets have higher resolution. A shapefile of NOAA hydrographic survey footprints containing Bathymetry Attributed Grids (BAGs) was a primary input for this layer. Regional datasets outside of BAG extents were generally lower in resolution and therefore of lower data confidence. Confidence categories consist of High, Medium, Low, and Very Low.

Source data used, processing steps taken, and quality assurance measures applied in this data are contained in a published report "Gulf of Maine - Geofom Data Development" produced by the contractor.

Credits

NOAA

Use limitations

NOAA provides no warranty, nor accepts any liability occurring from any incomplete, incorrect, or misleading data, or from any incorrect, incomplete, or misleading use of the data. It is the responsibility of the user to determine whether or not the data are suitable for the intended purpose.

Extent

West -71.241919 East -66.874534
North 45.109528 South 40.824127

Scale Range

Maximum (zoomed in) 1:5,000
Minimum (zoomed out) 1:150,000,000

Topics and Keywords ▶

Content type ↔ Downloadable Data

Citation ▶

Title Gulf of Maine NBS Data Confidence / Uncertainty (Seascapes 2)
Publication date 2021-10-29 00:00:00

Presentation formats ↔ digital map

Resource Details ▶

Dataset languages ↔ English (UNITED STATES)
Dataset character set utf8 - 8 bit UCS Transfer Format

Status on-going
Spatial representation type ↔ vector

Processing environment ↔ Microsoft Windows 10 Version 10.0 (Build 26200) ; Esri ArcGIS 13.6.0.59527

Credits
NOAA

ArcGIS item properties

Name ↔ CMECS_ALL_MERGE_Confidence_INSPIRE
Size ↔ 0.000
Location ↔ file://\192.168.17.14\ArcGIS\NROC\deliverables\20260401_toNROC_Seascapes2_Updated\Seascapes2_INSPIRE_Update.gdb
Access protocol ↔ Local Area Network

Extents ▶

Extent
Description

Gulf of Maine

Geographic extent

Bounding rectangle

Extent type

Extent used for searching

West longitude ⇔ -71.241919

East longitude ⇔ -66.874534

North latitude ⇔ 45.109528

South latitude ⇔ 40.824127

Extent contains the resource Yes

Extent in the item's coordinate system

westBL ⇔ 323571.740000

eastBL ⇔ 667257.478700

southBL ⇔ 4521340.114200

northBL ⇔ 4995117.731800

exTypeCode ⇔ Yes

Resource Maintenance ►

Resource maintenance

Update frequency as needed

Resource Constraints ►

Constraints

Limitations of use

NOAA provides no warranty, nor accepts any liability occurring from any incomplete, incorrect, or misleading data, or from any incorrect, incomplete, or misleading use of the data. It is the responsibility of the user to determine whether or not the data are suitable for the intended purpose.

Spatial Reference ►

ArcGIS coordinate system

Type ⇔ Projected

Geographic coordinate reference ⇔ GCS_North_American_1983

Projection ⇔ NAD_1983_UTM_Zone_19N

Coordinate reference details ⇔

ProjectedCoordinateSystem

WKID 26919

XOrigin -5120900

YOrigin -9998100

XYScale 10000

ZOrigin -100000

ZScale 10000

MOrigin -100000

MScale 10000

XYTolerance 0.001

ZTolerance 0.001

MTolerance 0.001

HighPrecision true

LatestWKID 26919

WKT

PROJCS["NAD_1983_UTM_Zone_19N",GEOGCS["GCS_North_American_1983",DATUM["D_North_American_1983",SPHEROID["GRS_1980",6378137.0,298.257222101]],PRIMEM["Grec

Reference system identifier

Value ⇔ 26919

Codespace ⇔ EPSG

Version ⇔ 6.11(3.0.1)

Spatial Data Properties ►

Vector ►

Level of topology for this dataset ⇔ geometry only

Geometric objects

Feature class name CMECS_ALL_MERGE_Confidence_INSPIRE

Object type ⇔ composite

Object count ⇔ 0

ArcGIS Feature Class Properties ►

Feature class name CMECS_ALL_MERGE_Confidence_INSPIRE

Feature type ⇔ Simple

Geometry type ⇔ Polygon

Has topology ⇔ FALSE

Feature count ⇔ 0

Spatial index ⇔ TRUE

Linear referencing ⇔ TRUE

Geoprocessing history ▶

Process

Process name
Date 2021-11-24 10:17:05
Tool location c:\program files (x86)\arcgis\desktop10.8\ArcToolbox\Toolboxes\Data Management Tools.tbx\CalculateField
Command issued
CalculateField NBS_GOM_Data_Confidence TwoClass [Confidence_level] VB #
Include in lineage when exporting metadata No

Process

Process name
Date 2021-11-24 10:18:00
Tool location c:\program files (x86)\arcgis\desktop10.8\ArcToolbox\Toolboxes\Data Management Tools.tbx\CalculateField
Command issued
CalculateField NBS_GOM_Data_Confidence TwoClass "Low" VB #
Include in lineage when exporting metadata No

Process

Process name
Date 2021-12-10 10:44:46
Tool location c:\program files\arcgis\pro\Resources\ArcToolbox\toolboxes\Conversion Tools.tbx\FeatureClassToFeatureClass
Command issued
FeatureClassToFeatureClass NBS_GOM_Data_Confidence C:\Users\maryjo.watson\Documents\NOAA_GEOFORMS_DEV\DISTRIBUTED\20211210
NBS_GOM_Data_Confidence.shp # "Confidence_level" "Confidence_level" true true false 25 Text 0
0,First,#,NBS_GOM_Data_Confidence,Confidence_level,0,25;Shape_Length "Shape_Length" false true true 8 Double 0
0,First,#,NBS_GOM_Data_Confidence,Shape_Length,-1,-1;Shape_Area "Shape_Area" false true true 8 Double 0
0,First,#,NBS_GOM_Data_Confidence,Shape_Area,-1,-1;TwoClass "TwoClass" true true false 5 Text 0 0,First,#,NBS_GOM_Data_Confidence,TwoClass,0,5"

Include in lineage when exporting metadata No

Process

Process name
Date 2022-06-27 14:40:15
Tool location c:\program files\arcgis\pro\Resources\ArcToolbox\toolboxes\Conversion Tools.tbx\FeatureClassToFeatureClass
Command issued
FeatureClassToFeatureClass NBS_GOM_Data_Confidence W:\GIS\User_Data\Claire\RegionalGeoform\GOMSeascapes_AdditionalLayers
GOM_DataConfidence_Updated.shp # "Confidence" "Confidence" true true false 25 Text 0
0,First,#,NBS_GOM_Data_Confidence,Confidence,0,25;Shape_Leng "Shape_Leng" true true false 19 Double 0
0,First,#,NBS_GOM_Data_Confidence,Shape_Leng,-1,-1;Shape_Area "Shape_Area" true true false 19 Double 0
0,First,#,NBS_GOM_Data_Confidence,Shape_Area,-1,-1;TwoClass "TwoClass" true true false 5 Text 0 0,First,#,NBS_GOM_Data_Confidence,TwoClass,0,5"

Include in lineage when exporting metadata No

Process

Process name
Date 2022-06-27 14:47:52
Tool location c:\program files\arcgis\pro\Resources\ArcToolbox\toolboxes\Data Management Tools.tbx\UpdateSchema
Command issued
UpdateSchema "CIMDATA=<CIMStandardDataConnection xsi:type='typens: CIMStandardDataConnection' xmlns:xsi='http://www.w3.org/2001/XMLSchema-instance' xmlns:xs='http://www.w3.org/2001/XMLSchema' xmlns:typens='http://www.esri.com/schemas/ArcGIS/2.9.0'>
<WorkspaceConnectionString>DATABASE=W:\GIS\User_Data\Claire\RegionalGeoform\GOMSeascapes_AdditionalLayers</WorkspaceConnectionString>
<WorkspaceFactory>Shapefile</WorkspaceFactory><Dataset>GOM_DataConfidence_Updated</Dataset><DatasetType>esriDTCFeatureClass</DatasetType>
</CIMStandardDataConnection>" <operationSequence><workflow><DeleteField><field_name>TwoClass</field_name></DeleteField></workflow><workflow>
<AddField><field_name>Notes</field_name><field_type>TEXT</field_type><field_length>255</field_length>
<field_is_nullable>False</field_is_nullable><field_is_required>False</field_is_required></AddField></workflow></operationSequence>
Include in lineage when exporting metadata No

Process

Process name
Date 2022-06-28 10:50:12
Tool location c:\program files\arcgis\pro\Resources\ArcToolbox\toolboxes\Data Management Tools.tbx\CalculateField
Command issued
CalculateField GOM_DataConfidence_Updated Confidence "Very low" "Python 3" # Text NO_ENFORCE_DOMAINS
Include in lineage when exporting metadata No

Process

Process name
Date 2022-06-28 10:51:55
Tool location c:\program files\arcgis\pro\Resources\ArcToolbox\toolboxes\Data Management Tools.tbx\CalculateField
Command issued
CalculateField GOM_DataConfidence_Updated Notes "Extremely poor underlying bathymetry. Geoform classifications should only be interpreted as
indicating general flatness or complexity at the 1:1,000,000 scale." "Python 3" # Text NO_ENFORCE_DOMAINS
Include in lineage when exporting metadata No

Process

Process name
Date 2022-06-28 11:18:55
Tool location c:\program files\arcgis\pro\Resources\ArcToolbox\toolboxes\Data Management Tools.tbx\CalculateField
Command issued
CalculateField GOM_DataConfidence_Updated Confidence "No confidence Remove" "Python 3" # Text NO_ENFORCE_DOMAINS
Include in lineage when exporting metadata No

Process

Process name
Date 2022-06-28 11:19:25
Tool location c:\program files\arcgis\pro\Resources\ArcToolbox\toolboxes\Data Management Tools.tbx\CalculateField
Command issued
CalculateField GOM_DataConfidence_Updated Notes "No underlying data and edge effects. Remove portion" "Python 3" # Text NO_ENFORCE_DOMAINS
Include in lineage when exporting metadata No

Process

Process name
Date 2022-06-28 11:20:29
Tool location c:\program files\arcgis\pro\Resources\ArcToolbox\toolboxes\Data Management Tools.tbx\CalculateField
Command issued
CalculateField GOM_DataConfidence_Updated Confidence "No confidence. Remove portion of model" "Python 3" # Text NO_ENFORCE_DOMAINS
Include in lineage when exporting metadata No

Process

Process name
Date 2022-06-28 11:21:19
Tool location c:\program files\arcgis\pro\Resources\ArcToolbox\toolboxes\Data Management Tools.tbx\CalculateField
Command issued
CalculateField GOM_DataConfidence_Updated Confidence "Very low" "Python 3" # Text NO_ENFORCE_DOMAINS
Include in lineage when exporting metadata No

Process

Process name
Date 2022-06-28 11:25:03
Tool location c:\program files\arcgis\pro\Resources\ArcToolbox\toolboxes\Data Management Tools.tbx\CalculateField
Command issued
CalculateField GOM_DataConfidence_Updated Confidence "No confidence. Remove." "Python 3" # Text NO_ENFORCE_DOMAINS
Include in lineage when exporting metadata No

Process

Process name
Date 2022-06-28 12:52:19
Tool location c:\program files\arcgis\pro\Resources\ArcToolbox\toolboxes\Data Management Tools.tbx\CalculateField
Command issued
CalculateField GOM_DataConfidence_Updated Confidence "No confidence. Remove." "Python 3" # Text NO_ENFORCE_DOMAINS
Include in lineage when exporting metadata No

Process

Process name
Date 2022-06-28 12:52:42
Tool location c:\program files\arcgis\pro\Resources\ArcToolbox\toolboxes\Data Management Tools.tbx\CalculateField
Command issued
CalculateField GOM_DataConfidence_Updated Notes "No underlying data. Portion should be removed from the model." "Python 3" # Text NO_ENFORCE_DOMAINS
Include in lineage when exporting metadata No

Process

Process name
Date 2022-06-28 13:14:03
Tool location c:\program files\arcgis\pro\Resources\ArcToolbox\toolboxes\Data Management Tools.tbx\CalculateField
Command issued
CalculateField GOM_DataConfidence_Updated Confidence "Low. Topo Derived." "Python 3" # Text NO_ENFORCE_DOMAINS
Include in lineage when exporting metadata No

Process

Process name
Date 2022-06-28 13:19:45
Tool location c:\program files\arcgis\pro\Resources\ArcToolbox\toolboxes\Data Management Tools.tbx\CalculateField
Command issued
CalculateField GOM_DataConfidence_Updated Notes "Geoforms within this area were derived using topographic elevation data. Differences in geform classifications and edge effects between these areas and adjacent bathymetry derived areas is expected." "Python 3" # Text NO_ENFORCE_DOMAINS
Include in lineage when exporting metadata No

Process

Process name
Date 2022-06-28 14:04:42
Tool location c:\program files\arcgis\pro\Resources\ArcToolbox\toolboxes\Data Management Tools.tbx\Rename
Command issued
Rename W:\GIS\User_Data\Claire\RegionalGeoform\GOMSeascapes_AdditionalLayers\GOM_DataConfidence_Updated.shp
W:\GIS\User_Data\Claire\RegionalGeoform\GOMSeascapes_AdditionalLayers\ManualCorrection_GOM_DataConfidence_Updated.shp ShapeFile
Include in lineage when exporting metadata No

Process

Process name
Date 2026-03-09 15:37:26
Tool location c:\program files\arcgis\pro\Resources\ArcToolbox\toolboxes\Data Management Tools.tbx\CopyFeatures
Command issued
CopyFeatures GOM21_Data_Confidence_Updated "W:\NROC\vector\Seascape 2\Data_Confidence_Update.gdb\GOM21_Data_Confidence_Updated" # # # #
Include in lineage when exporting metadata No

Process

Process name
Date 2026-03-09 15:37:46
Tool location c:\program files\arcgis\pro\Resources\ArcToolbox\toolboxes\Data Management Tools.tbx\Rename
Command issued
Rename "W:\NROC\vector\Seascape 2\Data_Confidence_Update.gdb\GOM21_Data_Confidence_Updated" "W:\NROC\vector\Seascape 2\Data_Confidence_Update.gdb\GOM21_Data_Confidence_Updated_INSPIRE" FeatureClass
Include in lineage when exporting metadata No

Process

Process name

Date 2026-03-09 16:00:45
Tool location c:\program files\arcgis\pro\Resources\ArcToolbox\toolboxes\Analysis Tools.tbx\Erase
Command issued
Erase GOM21_Data_Confidence_Updated_INSPIRE NewAreas "W:\NROC\vector\Seascape
2\Data_Confidence_Update.gdb\GOM21_Data_Confidence_Updated_INSPIRE_erase" #
Include in lineage when exporting metadata No

Process

Process name
Date 2026-03-24 13:26:38
Tool location c:\program files\arcgis\pro\Resources\ArcToolbox\Toolboxes\Data Management Tools.tbx\UpdateSchema
Command issued
UpdateSchema "CIMDATA=<CIMStandardDataConnection xsi:type='typens: CIMStandardDataConnection' xmlns:xsi='http://www.w3.org/2001/XMLSchema-
instance' xmlns:xs='http://www.w3.org/2001/XMLSchema' xmlns:typens='http://www.esri.com/schemas/ArcGIS/3.6.0'>
<WorkspaceFactory>FileGDB</WorkspaceFactory><Dataset>GOM21_Data_Confidence_Updated_INSPIRE_erase</Dataset>
<DatasetType>esriDTFeatureClass</DatasetType></CIMStandardDataConnection>" <operationSequence>workflow<AddField>
<field_name>Confidence_INSPIRE</field_name><field_type>TEXT</field_type><field_length>255</field_length>
<field_is_nullable>True</field_is_nullable><field_is_required>False</field_is_required></AddField></workflow></operationSequence>
Include in lineage when exporting metadata No

Process

Process name
Date 2026-03-24 13:27:44
Tool location c:\program files\arcgis\pro\Resources\ArcToolbox\toolboxes\Data Management Tools.tbx\CalculateField
Command issued
CalculateField GOM21_Data_Confidence_Updated_INSPIRE_erase Confidence_INSPIRE "High" PYTHON3 # TEXT NO_ENFORCE_DOMAINS
Include in lineage when exporting metadata No

Process

Process name
Date 2026-03-24 13:28:46
Tool location c:\program files\arcgis\pro\Resources\ArcToolbox\toolboxes\Data Management Tools.tbx\CalculateField
Command issued
CalculateField GOM21_Data_Confidence_Updated_INSPIRE_erase Confidence_INSPIRE "Medium" PYTHON3 # TEXT NO_ENFORCE_DOMAINS
Include in lineage when exporting metadata No

Process

Process name
Date 2026-03-24 13:30:26
Tool location c:\program files\arcgis\pro\Resources\ArcToolbox\toolboxes\Data Management Tools.tbx\CalculateField
Command issued
CalculateField GOM21_Data_Confidence_Updated_INSPIRE_erase Confidence_INSPIRE "Low" PYTHON3 # TEXT NO_ENFORCE_DOMAINS
Include in lineage when exporting metadata No

Process

Process name
Date 2026-03-24 13:38:06
Tool location c:\program files\arcgis\pro\Resources\ArcToolbox\toolboxes\Data Management Tools.tbx\CalculateField
Command issued
CalculateField GOM21_Data_Confidence_Updated_INSPIRE_erase Confidence_INSPIRE "No Confidence" PYTHON3 # TEXT NO_ENFORCE_DOMAINS
Include in lineage when exporting metadata No

Process

Process name
Date 2026-03-24 14:06:48
Tool location c:\program files\arcgis\pro\Resources\ArcToolbox\toolboxes\Analysis Tools.tbx\Clip
Command issued
Clip GOM21_Data_Confidence_Updated_INSPIRE_erase CMECS_ALL_MERGE "W:\NROC\vector\Seascape 2\FINAL_MERGE.gdb\CMECS_ALL_MERGE_Confidence_INSPIRE"

Include in lineage when exporting metadata No

Process

Process name
Date 2026-03-24 15:37:50
Tool location c:\program files\arcgis\pro\Resources\ArcToolbox\toolboxes\Data Management Tools.tbx\CalculateField
Command issued
CalculateField CMECS_ALL_MERGE_Confidence_INSPIRE Confidence_INSPIRE "High" PYTHON3 # TEXT NO_ENFORCE_DOMAINS
Include in lineage when exporting metadata No

Process

Process name
Date 2026-03-30 11:24:07
Tool location c:\program files\arcgis\pro\Resources\ArcToolbox\Toolboxes\Data Management Tools.tbx\CopyMultiple
Command issued
CopyMultiple "'W:\NROC\vector\Seascape 2\FINAL_MERGE.gdb\CMECS_ALL_MERGE_Confidence_INSPIRE' FeatureClass; 'W:\NROC\vector\Seascape
2\FINAL_MERGE.gdb\CMECS_ALL_MERGE' FeatureClass" W:\NROC\deliverables\20260401_toNROC_Seascapes2_Updated\Seascapes2_INSPIRE_Update.gdb
CMECS_ALL_MERGE_Confidence_INSPIRE; CMECS_ALL_MERGE "CMECS_ALL_MERGE_Confidence_INSPIRE FeatureClass CMECS_ALL_MERGE_Confidence_INSPIRE
#; CMECS_ALL_MERGE FeatureClass CMECS_ALL_MERGE #"
Include in lineage when exporting metadata No

Process

Process name
Date 2026-03-30 11:49:48
Tool location c:\program files\arcgis\pro\Resources\ArcToolbox\Toolboxes\Data Management Tools.tbx\Rename
Command issued
Rename W:\NROC\deliverables\20260401_toNROC_Seascapes2_Updated\Seascapes2_INSPIRE_Update.gdb\CMECS_ALL_MERGE_Confidence_INSPIRE
W:\NROC\deliverables\20260401_toNROC_Seascapes2_Updated\Seascapes2_INSPIRE_Update.gdb\Seascapes2_CMECS_Geoform_Confidence FeatureClass
Include in lineage when exporting metadata No

Process

Date 2026-04-10 11:28:58

Tool location c:\program files\arcgis\pro\Resources\ArcToolbox\toolboxes\Data Management Tools.tbx\CopyMultiple

Command issued

```
CopyMultiple "c:\BT_SCRATCH\CONF_FIX\Seascapes2_INSPIRE_Update.gdb\Seascapes2_CMECS_Geoform_Confidence_FeatureClass"  
W:\NR0C\deliverables\20260401_toNR0C_Seascapes2_Updated\Seascapes2_INSPIRE_Update.gdb Seascapes2_CMECS_Geoform_Confidence_1  
"Seascapes2_CMECS_Geoform_Confidence_FeatureClass Seascapes2_CMECS_Geoform_Confidence_1 #"  
Include in lineage when exporting metadata No
```

Process

Date 2026-04-10 11:30:40

Tool location c:\program files\arcgis\pro\Resources\ArcToolbox\toolboxes\Data Management Tools.tbx\Rename

Command issued

```
Rename W:\NR0C\deliverables\20260401_toNR0C_Seascapes2_Updated\Seascapes2_INSPIRE_Update.gdb\Seascapes2_CMECS_Geoform_Confidence_1  
W:\NR0C\deliverables\20260401_toNR0C_Seascapes2_Updated\Seascapes2_INSPIRE_Update.gdb\Seascapes2_CMECS_Geoform_Confidence_FeatureClass  
Include in lineage when exporting metadata No
```

Process

Date 2026-05-18 12:51:03

Tool location c:\program files\arcgis\pro\Resources\ArcToolbox\toolboxes\Data Management Tools.tbx\CalculateField

Command issued

```
CalculateField Seascapes2_CMECS_Geoform_Confidence Confidence !Confidence_INSPIRE! PYTHON3 # TEXT NO_ENFORCE_DOMAINS  
Include in lineage when exporting metadata No
```

Process

Date 2026-05-18 12:59:11

Tool location c:\program files\arcgis\pro\Resources\ArcToolbox\toolboxes\Data Management Tools.tbx>DeleteField

Command issued

```
DeleteField Seascapes2_CMECS_Geoform_Confidence Confidence_INSPIRE DELETE_FIELDS  
Include in lineage when exporting metadata No
```

Distribution ▶

Distribution format

Name ↔ File Geodatabase Feature Class

Transfer options

Transfer size ↔ 0.000

Fields ▶

Details for object CMECS_ALL_MERGE_Confidence_INSPIRE ▶

Type ↔ Feature Class

Row count ↔ 0

Field OBJECTID ▶

Alias ↔ OBJECTID

Data type ↔ OID

Width ↔ 4

Precision ↔ 0

Scale ↔ 0

Field description ↔

Internal feature number.

Description source ↔

Esri

Description of values ↔

Sequential unique whole numbers that are automatically generated.

Field Shape ▶

Alias ↔ Shape

Data type ↔ Geometry

Width ↔ 0

Precision ↔ 0

Scale ↔ 0

Field description ↔

Feature geometry.

Description source ↔

Esri

Description of values ↔

Coordinates defining the features.

Field Confidence ▶

Alias ↔ Confidence

Data type ↔ String

Width ↔ 25

Precision ↔ 0

Scale ⇔ 0

Field Shape_Leng ▶

Alias ⇔ Shape_Leng
Data type ⇔ Double
Width ⇔ 8
Precision ⇔ 0
Scale ⇔ 0

Field Notes ▶

Alias ⇔ Notes
Data type ⇔ String
Width ⇔ 254
Precision ⇔ 0
Scale ⇔ 0

Field Confidence_INSPIRE ▶

Alias ⇔ Confidence_INSPIRE
Data type ⇔ String
Width ⇔ 255
Precision ⇔ 0
Scale ⇔ 0

Field Shape_Length ▶

Alias ⇔ Shape_Length
Data type ⇔ Double
Width ⇔ 8
Precision ⇔ 0
Scale ⇔ 0

Field description ⇔
Length of feature in internal units.

Description source ⇔
Esri

Description of values ⇔
Positive real numbers that are automatically generated.

Field Shape_Area ▶

Alias ⇔ Shape_Area
Data type ⇔ Double
Width ⇔ 8
Precision ⇔ 0
Scale ⇔ 0

Field description ⇔
Area of feature in internal units squared.

Description source ⇔
Esri

Description of values ⇔
Positive real numbers that are automatically generated.

Metadata Details ▶

Metadata language ⇔ English (UNITED STATES)
Metadata character set utf8 - 8 bit UCS Transfer Format

Scope of the data described by the metadata ⇔ dataset
Scope name ⇔ dataset

Last update ⇔ 2026-04-08

ArcGIS metadata properties

Metadata format ArcGIS 1.0
Standard or profile used to edit metadata FGDC

Created in ArcGIS for the item 2026-04-10 11:28:54
Last modified in ArcGIS for the item 2026-04-08 19:06:25

Automatic updates

Have been performed Yes
Last update 2026-03-24 13:42:01

Thumbnail and Enclosures ▶

Thumbnail
Thumbnail type
Image file